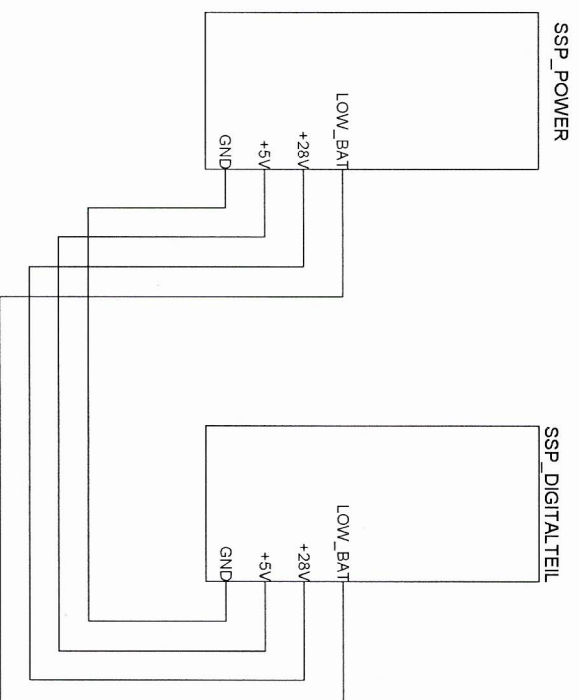
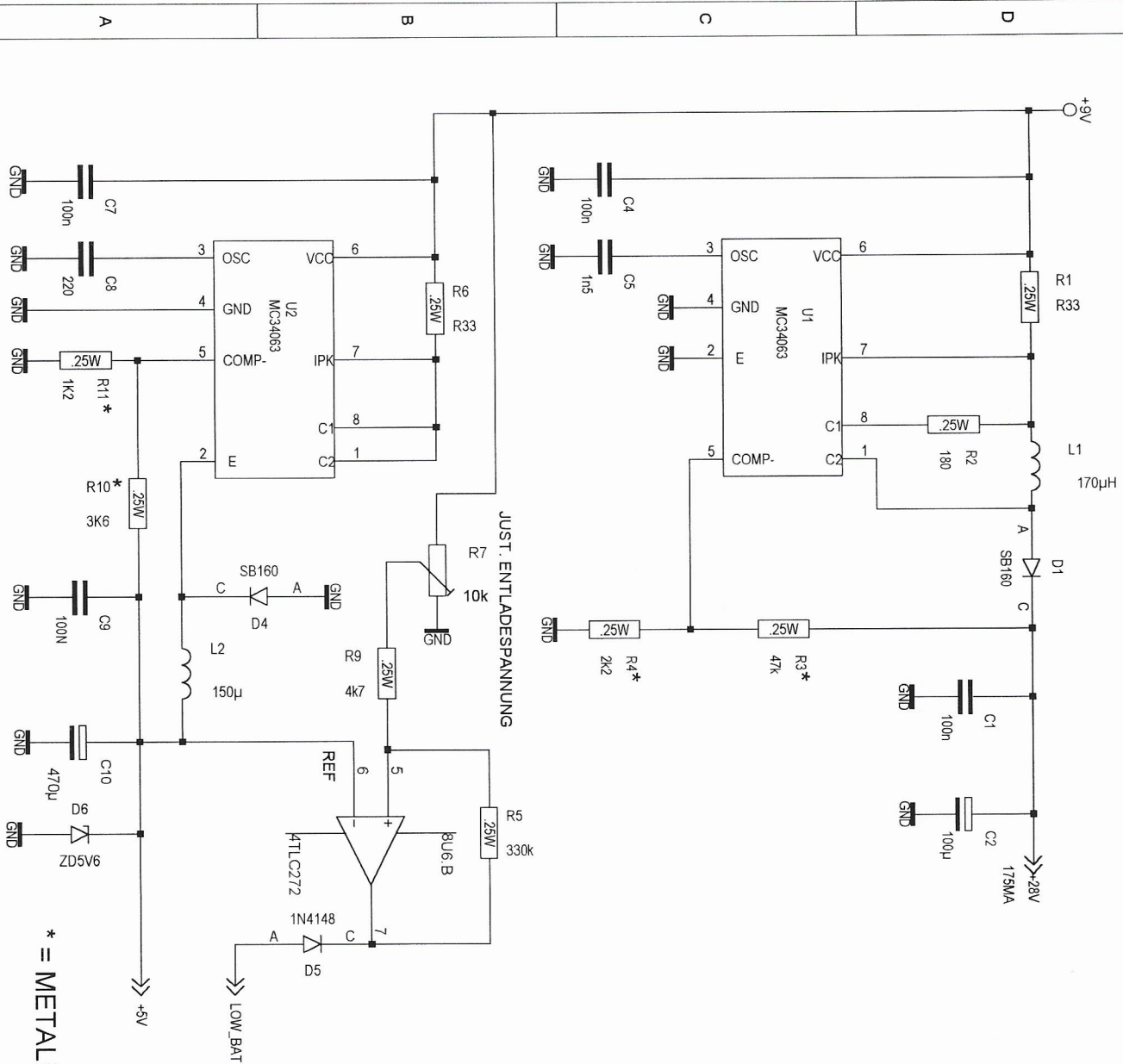


STROMSCHLEIFENPRÜFGERÄT



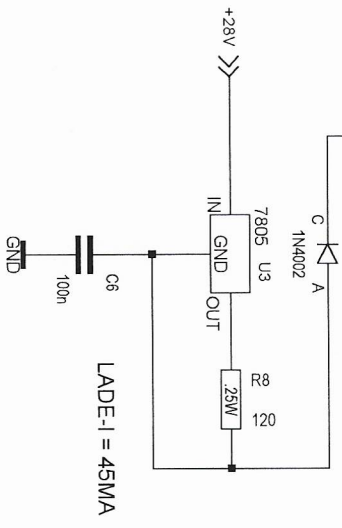
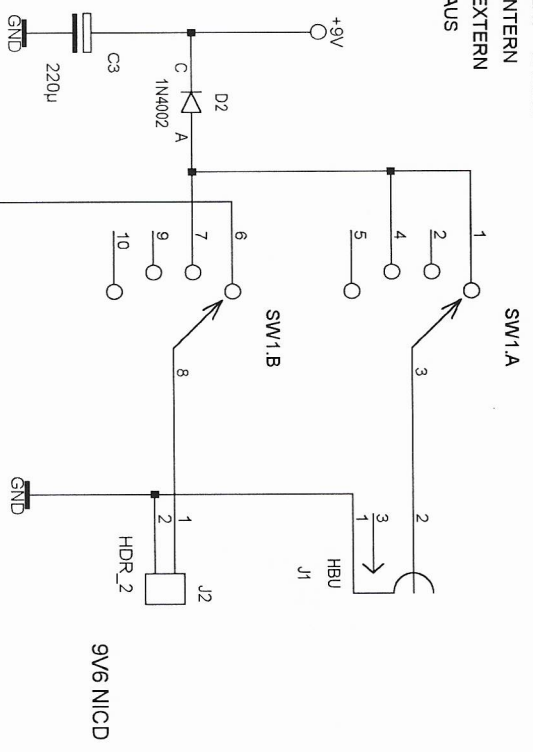
DL2RCG

REV: 1.0	DATE: 04.06.99	ENG: LINSMEIER
PROJECT: SSP - STROMSCHLEIFENPRÜFGERÄT		
COMPANY: ERICH LINSMEIER		
ADDRESS: LINDENSTR. 1		
CITY: 93483 POSING		
COUNTRY: GERMANY		
INITIAL	27.05.99	PAGE: 1 OF: 3

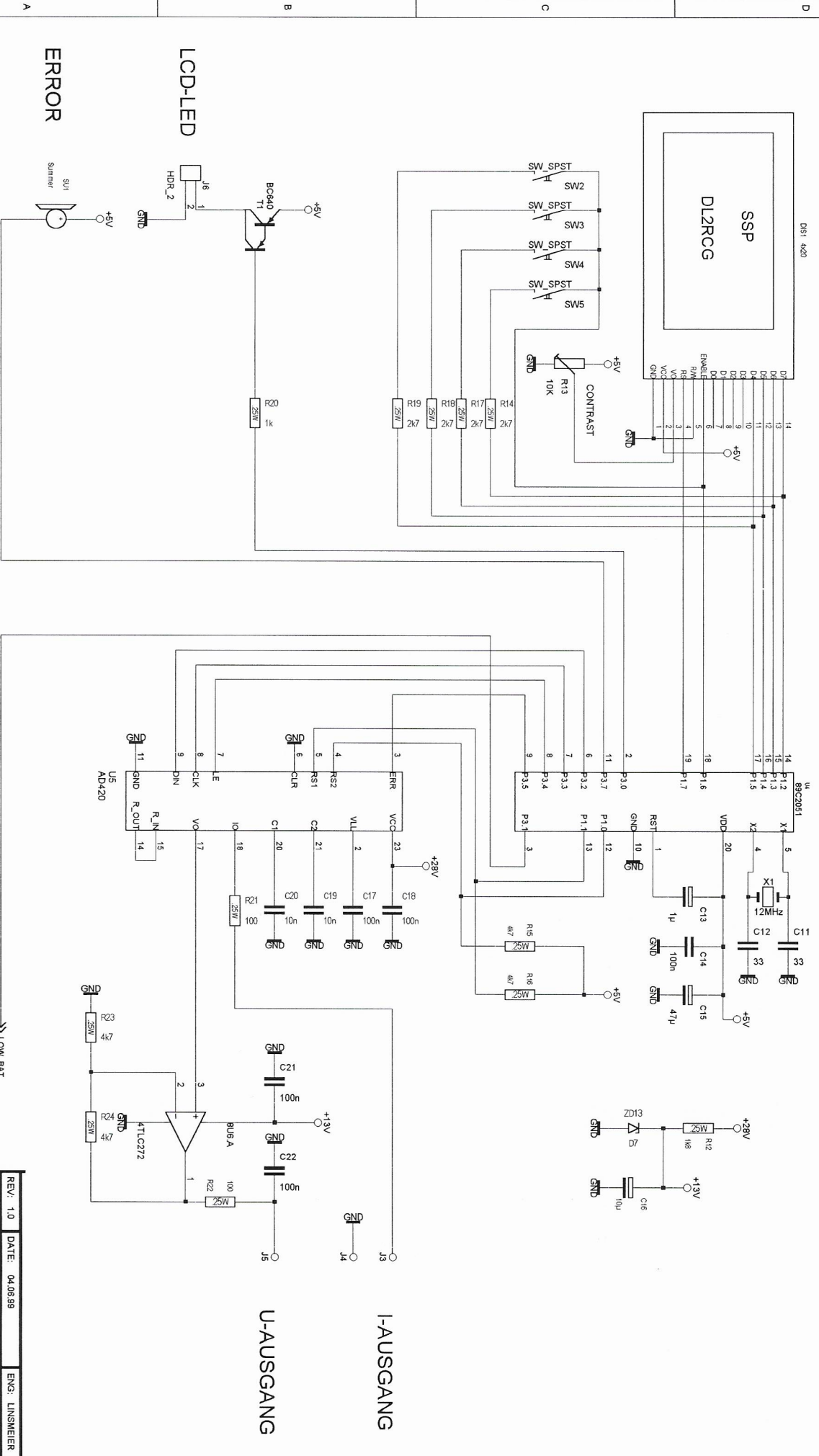


* = METALL 1%

- 1 = EXT + LADEN
- 2 = INTERN
- 3 = EXTERN
- 4 = AUS



REV: 1.0	DATE: 04.06.99	ENG: LINSMEIER
PROJECT: SSP - STROMVERSORGUNG		
COMPANY: ERICH LINSMEIER		
ADDRESS: LINDENSTR. 1		
CITY: 93483 POSING		
COUNTRY: GERMANY		
INITIAL: 27.05.99	PAGE: 2	OF: 3



ERROR

LCD-LED

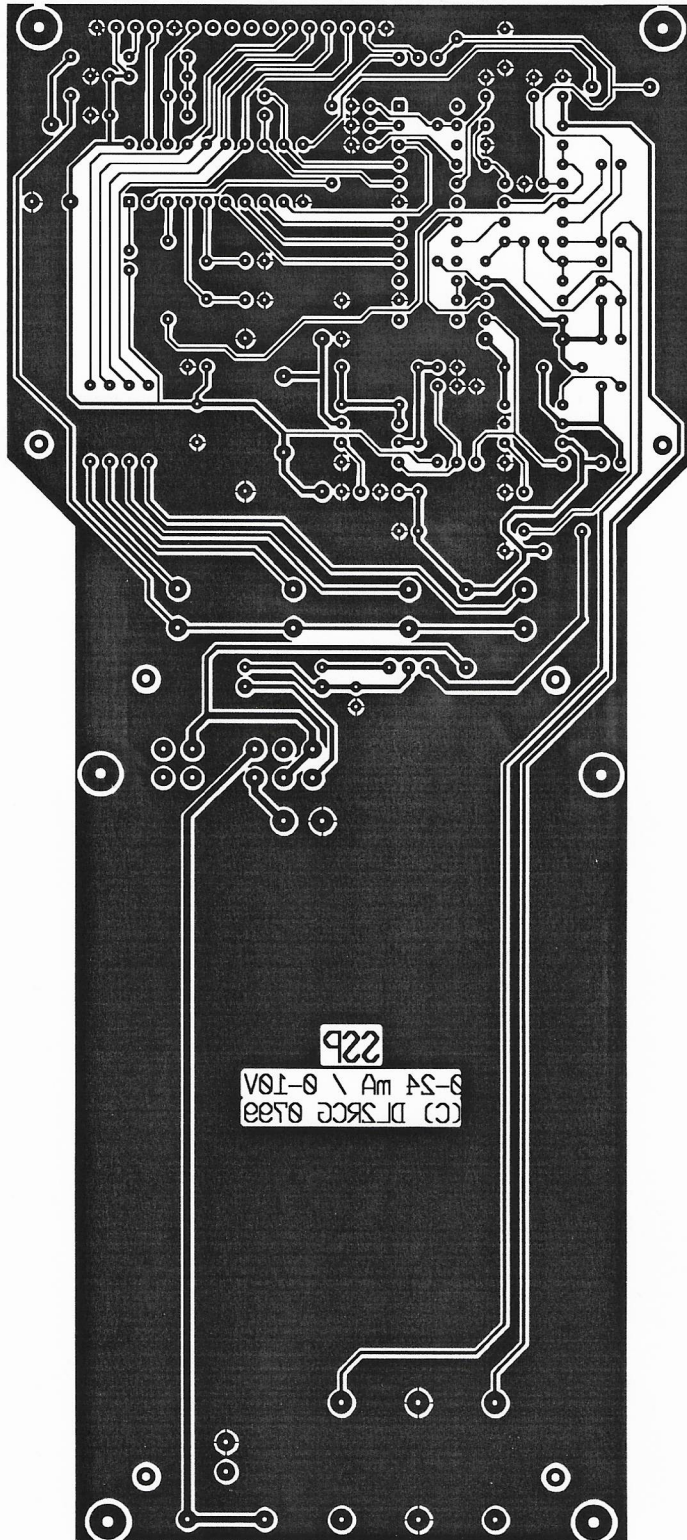
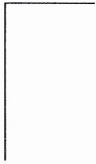
DL2RCG

U-AUSGANG

I-AUSGANG

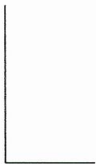
LOW_BAT

REV.: 1.0	DATE: 04.06.99	ENG: LINSMEIER
PROJECT: SSP - DIGITALTEIL		
COMPANY: ERICH LINSMEIER		
CITY/RESS: 84483 POSING		
COUNTRY: GERMANY		
INITIAL	27.05.99	PAGE: 3 OF: 3



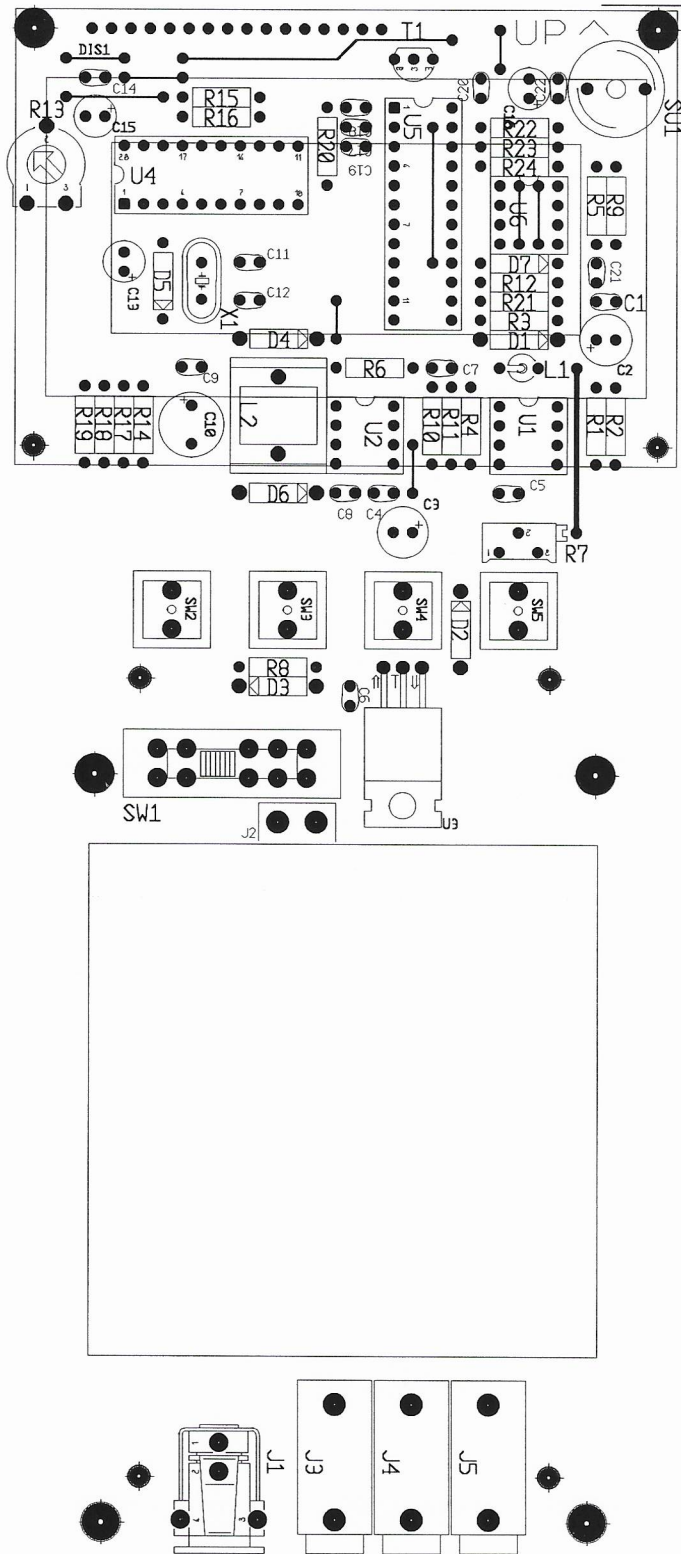
DL2RCG
SSP

222
V01-0 \ Am AS-0
(C) DL2RCG 0799





DL2RCG
SSP



B I L L O F M A T E R I A L S

Project name: D:\UTwin\project\SSP\SSP.UTSCH
 Time & date: 20:06:07 18-Jul-1999

#	Device	Value	Package type	Refdes
1	7805	7805	78XXV	U3
1	89C2051	-	-	U4
1	AD420	AD420	-	U5
3	CAPACITOR	100n	CRM5A	C14 C21 C22
2	CAPACITOR	33	CRM5A	C12 C11
7	CER.CAP	100n	CRM5A	C4 C6 C7 C17 C18 C9 C1
2	CER.CAP	10n	CRM5A	C19 C20
1	CER.CAP	1n5	CRM5A	C5
1	CER.CAP	220	CRM5A	C8
1	COIL	150μ	-	L2
1	COIL	170μH	-	L1
2	DIODE	1N4002	DIOD2	D3 D2
1	DIODE	1N4148	DIOD1	D5
2	DIODE	SB160	DIOD2	D4 D1
1	DIODE.ZENER	ZD13	DIOD1	D7
1	DIODE.ZENER	ZD5V6	DIOD2	D6
1	ELCO	1μ	CAX0	C13
1	ELCO	220μ	CAX0	C3
1	ELCO	470μ	CAX0	C10
1	ELCO	47μ	CAX0	C15
1	HBU	HBU	-	J1
3	HDR_1	HDR_1	-	J3 J4 J5
2	HDR_2	HDR_2	SIL2	J2 J6
1	LCD-DISPLAY	4x20	SIL14	DIS1
1	MC34063	MC34063	-	U2
1	MC34063	MC34063	DIP8	U1
1	PNP_DARLINGTON	BC640	?	T1
1	POL.CAP	100μ	RAD3	C2
1	POL.CAP	10μ	RAD1	C16
2	POT.METER_2	10k	POT0	R7 R13
2	RES.25W	100	RES12	R21 R22
1	RES.25W	120	RES12	R8
1	RES.25W	180	RES12	R2
1	RES.25W	1k	RES12	R20
1	RES.25W	1K2	RES12	R11
1	RES.25W	1k8	RES12	R12

1 RES.25W	2k2	RES12	R4
4 RES.25W	2k7	RES12	R14
			R17
			R18
			R19
1 RES.25W	330k	RES12	R5
1 RES.25W	3K6	RES12	R10
1 RES.25W	47k	RES12	R3
5 RES.25W	4k7	RES12	R15
			R16
			R9
			R23
			R24
2 RES.25W	R33	RES12	R1
			R6
1 SUMMER	Summer	-	SU1
1 SW_2X4	-	-	SW1
4 SW_SPST	SW_SPST	SIL2	SW2
			SW3
			SW4
			SW5
1 TLC272	TL082	-	U6
1 XTAL	12MHz	XTAL	X1

Current processed Variant : DEFAULT